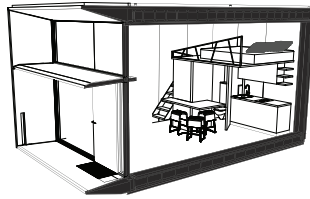


KODABY KODASEMA



KODA Light by Kodasema
standard equipment

instant. multifunctional. movable. zen.



KODA Light in black plywood



timber



zinc



cement fiber board

“ One of the most innovative homes of 2016 ”
Business Insider

Models

House name

KODA Light standard equipment

Project status

Available for purchase

KODA Light for Living

KODA home includes an open-space living room, a full size sleeping area, a shower room with toilet, a kitchen and a wooden terrace.

KODA Light Stay

A Hotel room solution has space for 2+2 visitors with a full size bed, upper-level sleeping area for two persons, a shower room with toilet, a kitchen and a wooden terrace. See a functioning system here: <http://www.kodastay.com/>

KODA Light for Working

Option for an open space office, cafe or a retail space with toilet, shower, kitchen, a wooden terrace and a resting area upstairs.



This 3D rendering is illustrative. For full list of equipment, please see the price list.

KODA is a perfect urban infill unit.

Combined together KODA houses create a vibrant mixture of homes and hotels, offices, cafés, co-working spaces, service spots and shops, and a community area in a snap.



Technical

DIMENSIONS

External	L 7233, W 3930, H 3985 mm / L 23.7, W 12.9, H 13.1 ft
Internal	L 5870, W 3392, H 3263 mm / L 19, W 11.1, H 10.7 ft
Terrace	L 1062, W 3730 mm / L 3.5, W 12.2 ft

AREA OF ROOMS

Living room + kitchen	16.8 m ² / 180.83 ft ²
Shower room	1.6 m ² / 17.2 ft ²
Area upstairs	7.6 m ² / 81.8 ft ²
Technical room	0.8 m ² / 8.6 ft ²
TOTAL	26.8 m ² / 288.5 ft ²
Terrace	3.8 m ² / 40.9 ft ²

Internal volume	64.97 m ³ / 2294 ft ³
Weight	ca. 13 tons
Construction materials	Wood, glass, steel

Transportation and installation	KODA Light is transportable via trailer in one piece and just needs a crane to fit it to the place. Installation and connecting to communications takes less than a day. No need for laying foundation, it is integrated, ground with levelled footing and sufficient weight-bearing capacity is enough. Although KODA Light needs support under walls.
---------------------------------	---

Heating	KODA Light has electric floor heating in living room, shower room and kitchen. For water heating there is an electric boiler. Features like light interior colors and sunscreen on the glass facade work against overheating.
---------	---

Equipment	KODA Light comes with built-in electrical and sewage system ready for connection, PAX EOS 100H ventilation system which exchanges the air and maintains the heat, water heater, ready to use bathroom and toilet, built-in LED lighting indoors and on the facade, with natural finishes on surfaces, etc.
-----------	--

Heat insulation	The initial offer includes 200mm mineral wool layer of insulation in walls and 250mm in ceiling and floor. The U-value for walls is 0.211 W/m ² K, for ceiling U-value is 0.145 W/m ² K and for floor U-value is 0.144 W/m ² K. The U-value of KODA Light 's three-ply glass facade is 0.73 W/m ² K.
-----------------	--

Energy supply	Electrical grid
---------------	-----------------

Required connections	Water, electrical grid, sewerage
----------------------	----------------------------------



World
Architecture
Festival

World Architecture Festival 2016:
SMALL PROJECT PRIZE FINALIST
2017:
SCHOOLS FINALIST



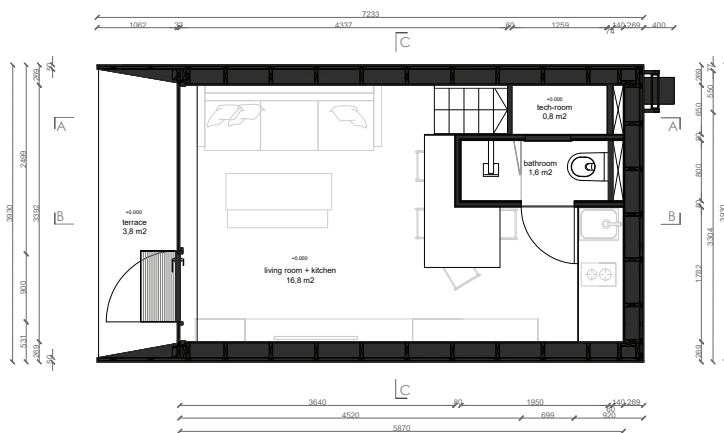
WAN
URBAN
CHALLENGE

WAN Urban Challenge 2017:
London Housing
COMPETITION WINNER

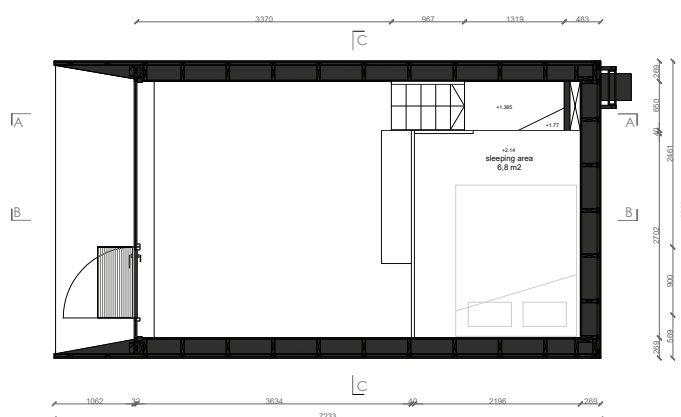


AMERICAN
ARCHITECTURE
PRIZE

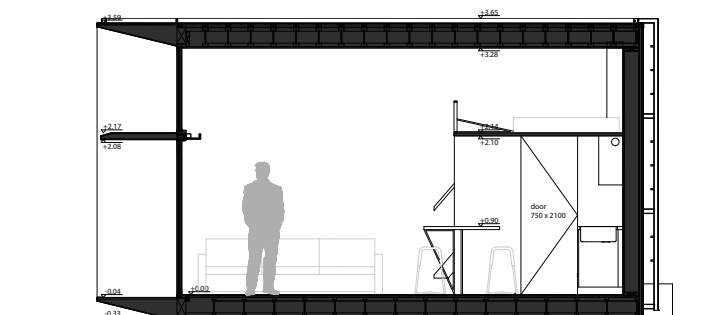
American Architecture Prize 2016:
SILVER MEDAL FOR INTERIOR
2017:
HOSPITALITY ARCHITECTURE &
URBAN DESIGN WINNER



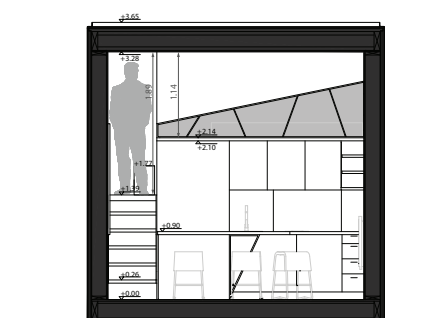
Ground floor plan M 1:100 / A4



First floor plan (h=2,6m) M 1:100 / A4



Section B-B M 1:100 / A4



Section C-C M 1:100 / A4

Architects: Ülar Mark, Maria Alnek, Liina-Liis Pihu, Eva-Liisa Lepik
Interior design: Angela Orgusaar, Ralf Tamm